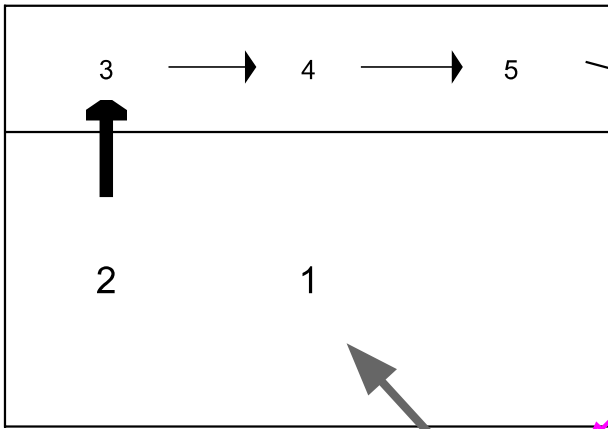


7 | B  
 8 | E  
 9 | N  
 10 | C  
 11 | H

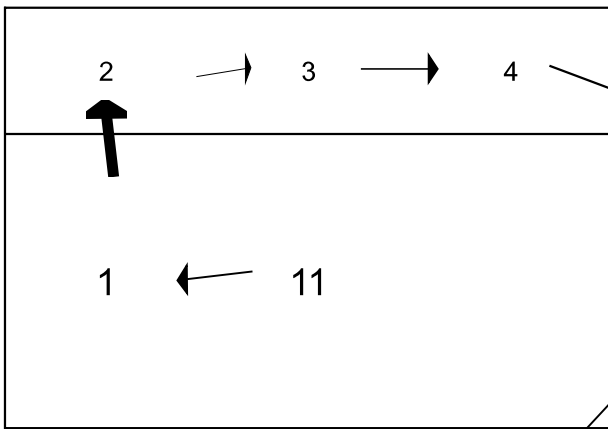
1.  
 Server

If the server misses the ball she/he can now step up 10 feet or less to the end line and serve again. If she misses the second attempt serve it is now point for the other team as well as serve



6 | B  
 7 | E  
 8 | N  
 9 | C  
 10 | H

11  
 Server



5 | B  
 6 | E  
 7 | N  
 8 | C  
 9 | H

10  
 Server